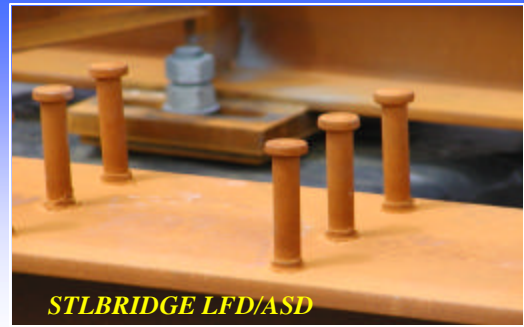


**Bridgesoft Inc.**

***STLBRIDGE LFD/ASD***  
***Version 7.1***



***New Features:***

- ***Dead Load Point Load Capability***
- ***Output Viewer***
- ***Default Text Editor***

***Dead Load Point Load Capability***

STLBRIDGE now has the capability to add dead load point loads anywhere along the girder. The point loads can be specified to any dead load stage which includes DLNC-Steel, DLNC-concrete and SDL. This feature can be used to add loads from such items as sign supports, diaphragms, lighting and other loads.

***Output Viewer***

The capability to view the program output is now available to the user without leaving the program. Within the printout window the user can select the output to view on screen simply by checking the button next to the available output.

***Default Text Editor***

Any text editor can be used to view the program output on screen. Within the Settings Window, the user can browse for the text editor of choice and save it with the other default settings.